

# ***PAPPLEWICK PARISH COUNCIL***

## ***NEWSLETTER***

***EDITION 33 April 2008***

### **Annual Parish Assembly**

The Annual Parish Assembly was held on 12<sup>th</sup> March. This is an opportunity to sum up the past year and for parishioners to raise any comments or concerns. In another busy year for the Council, key points raised by Cllr. Colin Womble, Parish Council Chairman, in his Annual Report included:

- How potential long-term difficulties for the Parish Council had been overcome by residents stepping forward for co-option as councillors following last May's elections.
- Successful completion of the Playing Field skate park despite inclement weather causing problems with installation of the equipment. Thanks were expressed to Richard Hull and Cllr. Janet Robinson for the considerable assistance they had rendered in resolving these difficulties.
- A number of factors had conspired together necessitating closure of the Playing Field for several weeks whilst remedial action was undertaken. Efforts by councillors, and close co-operation from the police, meant that the Playing Field could be opened again within a relatively short space of time.
- The Playing Field Committee had secured grants towards other new equipment.
- A very successful Bonfire & Firework had been held in November, thanks to everyone who helped stage the event and attended on the evening in question.
- The Parish Council had agreed to provide support for the extension to St. James Churchyard.
- Moor Pond Wood continues to be a shining example of what can be achieved by volunteers – with work continuing to preserve this important historical and ecological environment.
- The parish web site had been updated and three editions of Newsletter produced.
- A new Neighbourhood Watch scheme had been established and any household not currently a member urged to join.
- Agreement had been reached with Severn Trent Water to relocate the Mansfield Road notice board.

The full text of the Annual Report, together with reports from Council Committees will be available at [www.papplewick.org/documets.htm](http://www.papplewick.org/documets.htm) by following the links to Council Minutes and selecting 'Mar 2008 (APA)'

## Policing Priorities

Every so often the police ask us what matters around the parish we would like them to focus upon, available resources permitting. The Parish Council has asked P.C. Andy Vale and PCSO Joe Parlatt to address inappropriate traffic speed, fly-tipping and vehicles contravening the weight limits which apply to several roads in the parish. P.C. Vale informs us that speed and weight limit enforcement checks will shortly be mounted by one of his colleagues. Please ensure you drive within the applicable speed limits at all times.

What do you think the policing priorities should be for this parish? Other examples include burglary, anti-social behaviour, auto crime, drugs, graffiti, doorstep conmen, dog fouling, and inappropriate parking. If you are interested in contributing towards how Papplewick is policed, please let the Clerk know your views, either by post or e-mail.

It is important that all criminal activity within the parish is reported. For non-urgent matters our neighbourhood policing team can be contacted at Ravenshead Contact Point, Milton Court, Ravenshead, Nottingham NG15 9BD. PC 85 Andy Vale can be reached on 0115 967 0999 extn. 370, by mobile on 07775 821582 or e-mail [Andrew.Vale@nottinghamshire.pnn.police.uk](mailto:Andrew.Vale@nottinghamshire.pnn.police.uk). PCSO 8186 Joe Parlatt can also be contacted on 0115 967 0999 extn. 3470 or by e-mail [parlatt.joe@nottinghamshire.pnn.police.uk](mailto:parlatt.joe@nottinghamshire.pnn.police.uk).

For general advice on crime prevention visit the Nottinghamshire Police web site at [www.nottinghamshire.police.uk/crimereduction/](http://www.nottinghamshire.police.uk/crimereduction/).

---

---

## Neighbourhood Watch



Neighbourhood Watch now has its own pages on the Parish website. Visit [www.papplewick.org/nhw\\_index.htm](http://www.papplewick.org/nhw_index.htm) (note the underscore between nhw and index) for contact information and constantly updated 'Ringmaster' alerts. 'RINGMASTER' is a system to alert residents to threats to safety and security. The information is made available by Nottinghamshire Police, for the purpose of crime prevention.

---

---

## Work Starts on New Footpath

Construction work has begun on a new footpath linking Papplewick Dam with the existing Papplewick to Linby path. Since Papplewick Dam was opened up to the public it has only been accessible from Linby Lane. The new path will run for 130m, mainly along the eastern edge of Top Upper Dam, connecting the northern end of Papplewick Dam with the Meadows footpath at a point just east of the River Leen bridge.

This new footpath (which is permissive only and not a right of way) has been brought about by the kind co-operation of landowners Mr. and Mrs. Cundy together with the Co-operative Group. It represents completion of another phase in the Parish Council's fifteen year Public Paths Strategy – which identified a number of potential routes for new paths in the parish.

The Leen Valley Conservation Volunteers recently installed a new footbridge in Papplewick Dam and some poplars have been pollarded to make them safe. Part of the route will be surfaced with stone with the remainder enclosed behind a post and wire fence. New signage will be erected at either end. Because usage of this path is at the discretion of the landowners, please do not stray from it and observe the Countryside Code at all times.

---

---

## First Contact



At the Parish Council's March meeting Julie Folkett talked to us about the First Contact

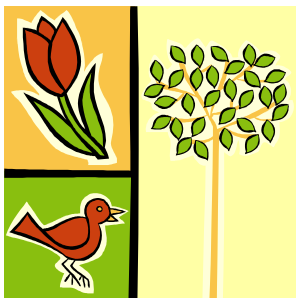
Signposting Scheme. It enables people over 60 to easily access a wide range of services to enable them to stay safe and independent in their own

homes. First Contact is particularly keen to reach people in rural areas who may face additional difficulties in accessing the services they need. If you are eligible please get in touch with First Contact – it costs nothing to ask. Telephone 08449 80 80 80 and ask for First Contact. Further information is available at: [http://www.nottinghamshire.gov.uk/home/social\\_care/notts50plus/notts50plusschemes-2/firstcontact.htm](http://www.nottinghamshire.gov.uk/home/social_care/notts50plus/notts50plusschemes-2/firstcontact.htm)

---

---

## Hedgerow Survey



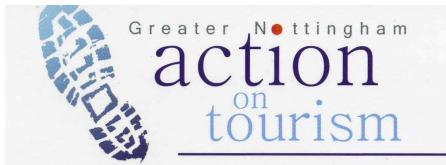
Notts. County Council's Biodiversity Officer, in conjunction with Sherwood Forest Trust and the Farming and Wildlife Advisory Group (FWAG) are looking to undertake a survey of hedgerows in Papplewick to help the Biodiversity Action Plan for Nottinghamshire. The initial idea is to survey the hedgerows across the parish to discover the quality of the hedges in the parish and using the results to try to use the data to help to build some baseline data for hedgerows for the

whole of Nottinghamshire. The survey will also look for harvest mice which have priority places on national and county biodiversity action plans. Papplewick has been chosen because the Friends of Moor Pond Wood are members of the Biodiversity Action Group for Notts. and the Biodiversity Officer has previously worked successfully with the Council under the parish paths partnership scheme.

## More Flowers

Many people enjoy the flowers that appear in roadside verges around the parish each spring. Thanks to a generous discretionary donation of £300 from Cllr. Patricia

Andrews, more will be visible next year. Patricia is Newstead Ward member for Gedling Borough Council and has used part of her allocation from the "Members' Pot" to fund this initiative. Parish Council volunteers will be planting additional bulbs and plants around the parish over the coming months.



## GNAT

The Parish Council has been invited to work with Greater Nottingham Action on Tourism to promote the area to a wider audience. GNAT is a project run by Rural Community Action Nottinghamshire in conjunction with the County Council and others. They are intending to produce leaflets for several villages in this locality under the heading of 'Byron Villages'. Papplewick was owned for some 250 years by various members of the Byron

family and the Parish Council is keen to raise awareness of Papplewick's unique historical and environmental heritage. Each year the parish receives visitors from around the world either visiting local family or researching their ancestral history. From the number of 'hits' on the [www.papplewick.org](http://www.papplewick.org) web site we know that many more people are interested in this locality. If you would like to know more about visiting other villages around Nottinghamshire or see examples of similar leaflets in the same series, visit [www.nottshiddengems.org.uk](http://www.nottshiddengems.org.uk).

## Did you know?

- ? The Friends of Moor Pond Wood will be hosting a barn Dance in the Village Hall on Friday, 25<sup>th</sup> April? Tickets (£8 including refreshments) are available from Maureen (0115 9632057), Marguerite (0115 9681968), Diane (0115 9635157) or Stephen (0115 9630808).
- ? Electric street lighting was first introduced to Papplewick in the autumn of 1946. That winter the Parish Council paid £4 6s 6d in electricity to operate the lamps.
- ? The Parish Council currently oversees 3,646m of public footpath under the P3 (Parish Paths Partnership) Scheme. Most maintenance work is undertaken by volunteers.

### \*\*\*\*\* Stop Press \*\*\*\*\*

A vacancy has arisen on the Council for a new councillor. Anyone interested in helping out with the Council's work as a member should contact the Clerk for further details.

**The Next Parish Council Meeting and Annual General Meeting is on Wednesday, 14<sup>th</sup> May 2008 at 7.15pm in the Village Hall. All parishioners welcome.**

Clerk to the Council: Vic Whyley Tel: 0115 859 8364 E-mail: [clerk@papplewick.org](mailto:clerk@papplewick.org)

Papplewick Parish Website: [www.papplewick.org](http://www.papplewick.org)

This edition edited by Colin Womble