

Bonfire and Fireworks



Remember, remember....
Friday, 5th November 2010
Gates open from 6.30pm
Bonfire lit at around 7.00pm



Once again Papplewick and Linby Parish Councils together with the Papplewick & Linby Leisure Enterprise Group will be hosting this annual event. Car parking on the Griffin's Head field by kind permission of the landlord. Full details can be found in the leaflet accompanying this Newsletter.

And please remember - for everyone's safety - no private fireworks or sparklers are allowed. Anyone using sparklers may be asked to leave the event.



Lorry Watch

New Lorry Watch signs have now been erected on roads leading into the village so large goods vehicles using Forest lane, Linby Lane or Main Street as a cut through have no excuses.



registered with Trading Standards to take part in this Scheme. This suggests that lorries passing through the parish are not generally regarded as a nuisance. The resources allocated to this pilot need to be justified and if lorries are not a problem the scheme will end shortly.

Relatively few people have so far

Therefore, please register your interest with Trading Standards. Reporting forms and details of the scheme can be found at www.papplewick.org/lorrywatch_index.html or contact:

Neil Savage or Rhia Dilloway

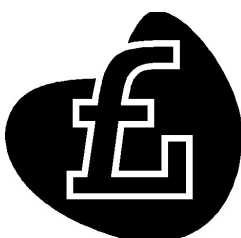
Trading Standards Officers

Nottinghamshire County Council

trading_standards@nottsc.gov.uk

Tel: 01623 452005

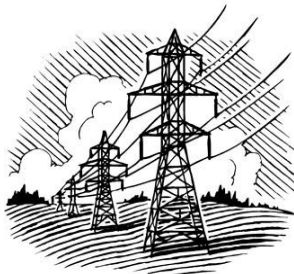
Finance



Like all local authorities the Parish Council has to set a budget each year. We have a committee of councillors who analyse what we have spent in previous years, what we need to pay our bills over the coming financial year

and how we will raise that money. For 2010-11 our budget worked out at £13,001. Most of this expenditure was met by our precept of £6,765 and Revenue Aid of £4,203 from Gedling Borough Council. Next year there is a real risk that the Revenue Aid we receive will either stop or be severely curtailed. The Council will therefore have difficult decisions to make when setting its budget for 2011-12.

Electricity Supplies & Main Street



A large section of Main Street receives its electricity supply through a sub-station adjacent to Old Mill Cottage. Central Networks are in the process of moving this sub-station and have been working with the Parish Council to secure access to a new site. Once negotiations have been concluded with the relevant landowners, the old sub-station will be disconnected from the distribution system and the new sub-station wired up. Because the new sub-station will be located off Church Lane, some significant works will be needed in Main Street to alter the underground cables. It is anticipated that these works will require Main Street to be closed to vehicular traffic for a period of time. At present, the Parish Council does not know when these works will take place but we will do our best to publicise the dates once known.

Playing Field

As reported previously, funds were secured to deal with drainage problems and carry out some levelling work. Work took place in mid-September and we hope that the installation of land drains will make the Field usable throughout the wetter parts of the year.

We are now looking at replacing the paved area, creating paths between the various items of equipment and installing replacement swings. Wicksteed Playscapes have quoted £31,440 to carry out this work. As the necessary funding has to be secured, which will not be easy in the current economic climate, it is likely to be some time before the next phase in our improvement scheme will get underway.

Planters

Papplewick & Linby Leisure Enterprise Group have been busy organising a planting scheme. They are acquiring a number of butts which will be filled with compost and planted out with a variety of seasonal flowering plants that we can all enjoy. Seven large butts will cost around £420 to purchase and a similar sum will be needed to adequately stock them.



Once installed around the parish, nominated volunteers will care for each butt and be responsible for watering during the summer season. We look forward to a brilliant floral display over the coming months.

Local Improvement Scheme (LIS)

Proof drawings for four new village boundary signs have been approved and the artist is now concluding the work in full colour. These signs will replace existing signs apart from on Linby Lane where it will be moved slightly towards Castle Mill. Each will have a 'please drive carefully' panel under its image. We do not yet have a date for installation.

Griffin's Head Licence Application

The Barking Badger Pub Company have recently submitted an application to Gedling's Licensing Department to carry out licensable activities including the sale of alcohol, live and/or recorded music and provide late night refreshments on the field behind the pub. If granted, these activities would have been allowed until midnight Mondays to Wednesdays and 1.00am between Thursday and Sundays.

A number of parishioners objected to the application on grounds that noise and disturbance would be created on and around the field until the above times. The Parish Council are not automatically notified by Gedling when such an application is made and we are grateful to those people who brought this application to our attention.

The Council recognises that a vibrant and successful pub business is essential if the Griffin is to remain open in times when many local pubs are closing their doors. However, councillors are also mindful of the potential nuisance that could be caused if events were held on the pub field utilising the full terms of the licence. With this in mind, the Council formally objected to the application. Following a mediation meeting between the landlord, residents and the police, revisions to the application were made and subsequently approved by Gedling's Licensing Committee. This effectively restricts the supply of alcohol on the field to 9.00pm each day. Gedling also decided that: "If problems do arise which can be directly related to these premises then the residents can apply for a review of the licence."

Papplewick Pumping Station

In June the Pumping Station Trust submitted a planning application to Gedling in order to build a replica of the recorder house which stood for many years on top of the old reservoir. Conditional permission has now been granted. This will enable the Trust to increase public accessibility to the reservoir, help ensure its long-term viability and see a welcome return of this once familiar landmark.

Census Day



Sunday, March 27th, 2011 is **CENSUS DAY**.

Census statistics are vital to help plan for the future. They provide accurate information on numbers of people, where they live, their characteristics and their needs. This all helps government decide the allocation of resources to public services, so that central and local government are able to plan local services, including education, healthcare and transport. The Office for National Statistics (ONS) who carry out the census, aim to

spread this information to as much of the population as possible to get them to see how important it is to complete and return the Census form. There is also a website which you may wish to have a look at for further information at www.census.gov.uk.



Big Budget Conversation

Notts. County Council has launched a consultation exercise to determine its future budget priorities and staffing levels. Cutting the money it spends on countryside management is likely to be seen as a soft option. Since the Moor Pond Wood project was launched as part of our millennium celebrations in 2000, the Parish Council and Friends of Moor Pond Wood have relied substantially upon Lee Scudder and his conservation volunteers to carry out the much needed improvement and maintenance works throughout Papplewick Dam, Dam Banks and Moor Pond Wood. There is a real risk that if funding for countryside management activities is cut, the above areas which have been so heavily used and greatly enjoyed by local people will become overgrown and unusable. Please support the county's countryside management activities by lodging your concerns at www.nottinghamshire.gov.uk/conversation or call the Contact Centre on Tel. 08449 80 80 80 .

Policing

PCSO Chris Shaw told the last Parish Council meeting that he and his colleagues are actively protecting the parish and are encouraging residents to report local crime (such as speeding motorcycles at unsocial hours or unwanted activity on the Playing Field) so that we remain on their priority list. Report such matters on 0300 300 99 99 and obtain a crime number.

Church Lane

As mentioned in the last Newsletter, the Parish Council is seeking a possessory title to Church Lane. Legal fees will amount to around £2,000. Will anyone who can help out with this work please contact the Clerk as a matter of urgency.

And Finally - Our Thanks

Firstly, to parishioners for your valued contribution in keeping the Playing Field clean and tidy. The litter bins have been well used with very little litter scattered about.

Secondly, to the residents of Linby Lane and Moor Road who have heeded previous requests for more considerate parking over the summer. Most householders now appreciate that parking on the grass verges or pavements can be very dangerous for pedestrians who are forced to walk into the road, especially children, people with pushchairs, older people, visually impaired people and wheelchair users. Let's continue to keep vulnerable road users safe.

Next Council meeting will be on Wednesday, 10th November 2010 at 7.15pm

All parishioners welcome

Email clerk@papplewick.org

Papplewick Parish Website: www.papplewick.org

This edition edited by Colin Womble